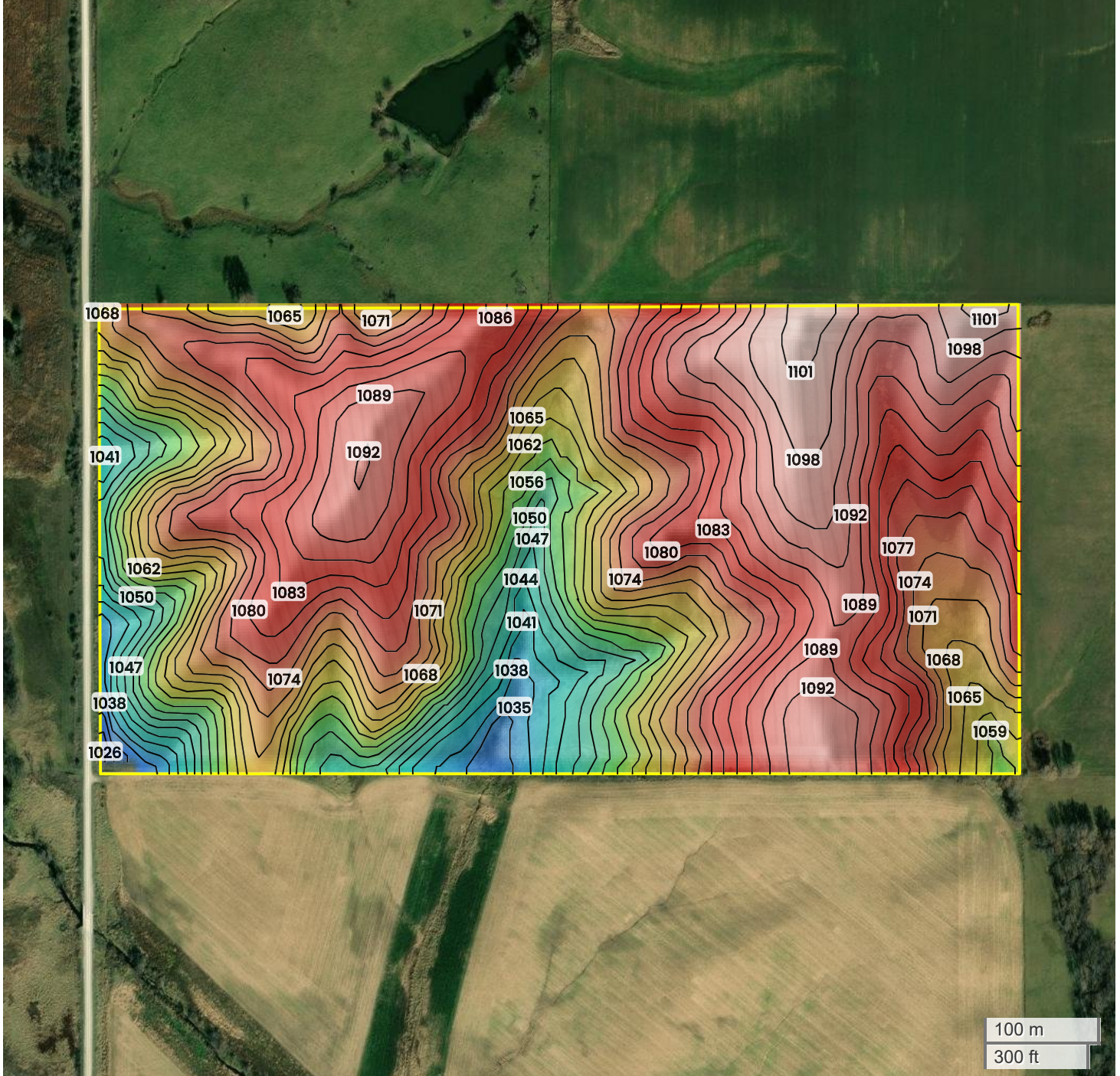




NORTH 80 ACRES
TOPOGRAPHY



1026 ft

1101 ft



Center: 40.664905, -93.369972

27-68N-22W

Warren Township
Wayne County, IA

Source: USGS 10m DEM

Interval(ft): 3

Max: 1101.0 ft

Min: 1026.0 ft

Range: 75.0 ft

Average: 1063.5 ft

FarmWorth, LLC makes no warranties, express or implied, regarding the accuracy of any information provided through FarmWorth.com. User is solely responsible for independently verifying all information prior to use and waives any claims against FarmWorth, LLC arising from inaccuracies in such information.